

ENCORE

At Columbia Station

PLAN B11

PLAN B11

OPEN 1
1 BATHROOM
553 SQ FT

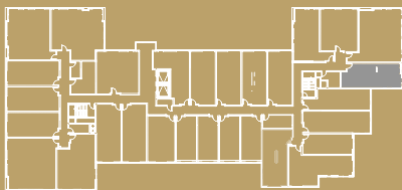
4689 Martin Luther King Jr Way S
Seattle, WA 98108

ENCORECOLUMBIASTATION.COM



MARTIN LUTHER KING JR WAY S

S SNOQUALMIE ST.



S ALASKA ST.

LEVELS 2-4

UNIT #	SQ FT
209	553 SF
309	553 SF
409	553 SF

0 1' 2' 4' 8'



Realogics

Sotheby's
INTERNATIONAL REALTY



OPEN ONE BEDROOM

This is not an offer to sell but intended for information only. Any representation as to square footage is approximate. Renderings, photography, illustrations, floor plans, amenities, finishes, and other information described herein are representative only and are not intended to reflect any specific feature, amenity, unit condition or view when built. No representation and warranties are made with regard to the accuracy, completeness or suitability of the information published herein. The developer reserves the right to make modification to materials, specifications, plans, pricing, designs, scheduling, and delivery without prior notice. Exclusively represented by Realogics Sotheby's International Realty.