

ENCORE

At Columbia Station

UNIT E5

UNIT E5

2 BEDROOMS
2 BATHROOMS
932 SQ FT

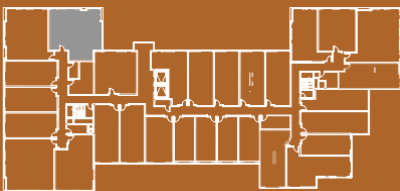
4689 Martin Luther King Jr Way S
Seattle, WA 98108

ENCORECOLUMBIASTATION.COM



MARTIN LUTHER KING JR WAY S

S SNOQUALMIE ST.



S ALASKA ST.

LEVELS 2-4



UNIT #	
228	932 SF
328	932 SF
428	932 SF

0 1' 2' 4' 8'

TWO BEDROOM



Realogics

Sotheby's
INTERNATIONAL REALTY



This is not an offer to sell but intended for information only. Any representation as to square footage is approximate. Renderings, photography, illustrations, floor plans, amenities, finishes, and other information described herein are representative only and are not intended to reflect any specific feature, amenity, unit condition or view when built. No representation and warranties are made with regard to the accuracy, completeness or suitability of the information published herein. The developer reserves the right to make modification to materials, specifications, plans, pricing, designs, scheduling, and delivery without prior notice. Exclusively represented by Realogics Sotheby's International Realty.